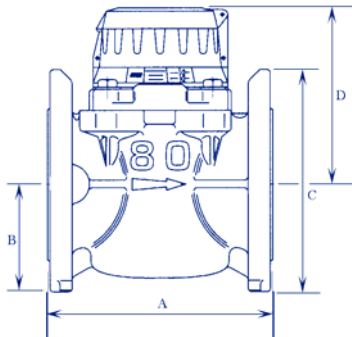


KENT (ELSTER) WATER METERS



H4000

**WOLTMANN TYPE
COLD WATER METER
CLASS B**



Part No. H4000

CAST IRON BODY (EPOXY COATED) WITH FLANGED CONNECTIONS

The Kent H4000 is a Woltmann-type meter designed for measuring bulk flows of cold potable water in commercial or industrial applications and revenue billing.

Available in various sizes for flow rates between 0.35 m³/h and 2,000 m³/h, the H4000 operates at temperatures up to 50°C and a maximum working pressure of 16 bar. Accuracy is maintained in both forward and reverse flow, and various register options are available to suit different applications.

The meter complies with all relevant international quality standards, substantially exceeding ISO4064, BS5728 Class B specifications for forward flow installations in horizontal, vertical and inclined pipelines.

Like all Kent meters, the H4000 is manufactured from the highest quality materials for maximum resistance to wear and corrosion. The meter body and cover are epoxy powder coated for protection in all environments. Thrust pads and stub spindles are manufactured in tungsten carbide and jeweled rotor bearings are used for maximum wear life. All wetted materials are UK WRAS approved against health risk.

It is recommended that an Kent H4010 basket type in-line strainer is fitted to protect the rotor and help reduce the affect of turbulence. (See Data Sheet No.15.06 for full details).

SIZE	A*	B	C	D
DN40	300	78	150	142
DN50	300	78	165	142
DN65	300	86	185	142
DN80	350	94	200	153
DN100	350	106	228	153
DN150	500	135	285	200
DN200	520	165	340	222
DN250	450	198	409	240
DN300	500	225	460	240

* Other face to face dimensions may be available to order, please contact sales

Features & Benefits

- Performance to ISO4064, BS5728 Class B.
- Multiple pulsed output for increased management data.
- Extended low and high flow performance.
- Suitable for forward & reverse flow metering.

Pressure & Temperature

Pressure range:-

Up to 16 bar.

Temperature Range:-

Up to 50°C.

**METERS ARE HELD IN STOCK WITH FLANGES UNDRILLED
TO ENABLE US TO DRILL TO YOUR REQUIREMENTS**

See Data Sheet 01.06b for flow specifications and pulse unit data



KENT (ELSTER) WATER METERS

H4000



FLOW & PULSE DATA PERFORMANCE TO ISO 4064, BS5728 CLASS B

H4000 PERFORMANCE (FORWARD FLOW)	DN	40	50	65	80	100	150	200	250	300
MAX OVERLOAD FLOW RATE $\pm 2\%$	m ³ /h	90	90	120	200	250	600	1000	1600	2000
MAX CONTINUOUS FLOW RATE $\pm 2\%$	m ³ /h	50	50	65	120	180	450	700	1000	1500
MIN CONTINUOUS FLOW RATE $\pm 5\%$ (Horizontal)	m ³ /h	0.35	0.35	0.4	0.5	0.6	1.8	4	6	12
MIN CONTINUOUS FLOW RATE $\pm 5\%$ (Vertical)	m ³ /h	0.45	0.45	0.75	1.2	1.2	4.5	7.5	12	18
HEADLOSS AT MAXIMUM FLOW	Bar	0.84	0.49	0.69	0.27	0.43	0.33	0.32	0.37	0.58

PR7 SELF POWERED INDUCTIVE PULSE TRANSMITTERS (SOLD SEPERATELY)

The H4000 uses an inductive register to deliver enhanced communications performance and tamper-proof security. The H4000 is compatible with the Emeris PR7 inductive pulse transmitter with two outputs, which offers both high and low speed bi-directional pulse capabilities as standard. The PR7 is fully compatible with other common ancillary devices including data loggers and AMR systems.

Understanding The Outputs

PR7 pulsers have outputs designed for every need. Each pulser has both primary and secondary outputs.

The primary output has two wires: one carries pulses when the meter is operating in both forward and reverse directions; the other is a directional flag. This is suitable for use with bi-directional counters, Emeris TRC600 radios, Elster's T210 Scancounter (in bi-directional mode) and with data loggers.

The secondary output also has two wires: one carries a pulse stream that compensates for any reverse flow; the other indicates compensation is in process. Use it with Elster's T210 Scancounter (in uni-directional mode) and with data loggers and TRC600 radios where backflow monitoring is not required.

PR7 10:10 Low Speed	DN	40	50	65	80	100	150	200	250	300
Primary Output	litre/pulse	10/1	10/1	10/1	10/1	10/1	100/1	100/1	100/1	100/1
Secondary Output	litre/pulse	10/1	10/1	10/1	10/1	10/1	100/1	100/1	100/1	100/1

PR7 1:10 High Speed	DN	40	50	65	80	100	150	200	250	300
Primary Output*	litre/pulse	1/1	1/1	1/1	1/1	1/1	10/1	10/1	10/1	10/1
Secondary Output	litre/pulse	10/1	10/1	10/1	10/1	10/1	100/1	100/1	100/1	100/1

* Should only be used with data loggers which are capable of registering 5ms pulse.

PR7 SELF POWERED PULSE TRANSMITTER WIRING TABLE

Yellow	White	Red	Green	Brown	Black
All Pulses	Directional Flag	Compensated Pulses	Compensation Flag	Tamper	Common

Externally powered versions are also available, contact sales for further details.

PR7 is an open collector pulse transmitter suitable for data logging, AMR and telemetry equipment. Check with your equipment supplier for compatibility.