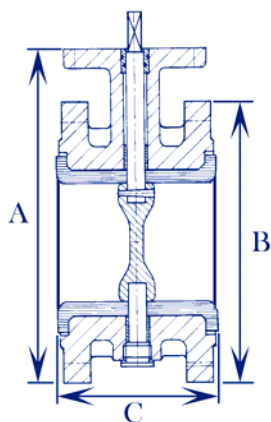


BUTTERFLY VALVES

EVFS/EVFL

WOUTER WITZEL EUROVALVE BUTTERFLY VALVE



Part No. EVFS (DOUBLE FLANGE, SHORT LENGTH PATTERN)

Part No. EVFL (DOUBLE FLANGE, LONG LENGTH PATTERN)

LEVER OPERATED UP TO DN150 & GEARBOX OPERATED DN200—DN300

An extremely well manufactured and robust valve with a double flange, suitable when a valve is called upon to work under arduous conditions

The butterfly valve offers quick opening and closing with full flow in either direction and leak tight shut off.

The materials available make this valve suitable for many applications including potable water, demineralized water, raw waste, sea and ballast water etc; and also for oils, gases/air and many other liquids.

Flange gaskets not needed since the lining that extends onto the faces acts as a gasket.

Features & Benefits

- WRAS Approved.
- Lloyds approval on request.
- Can be used as an end-of-line valve.
- Particularly suited to marine and sea-water applications.
- The rubber lining is bonded to the valve body.
- Suitable for fitting between PN10, PN16 flanges.

Pressure & Temperature

Pressure range:-

DN50-200 up to 16 bar.

DN250-300 up to 10 bar.

Temperature Range:-

NBR liner 0°C to 90°C.

EPDM liner -20°C to 120°C.

SIZE	DN50	DN65	DN80	DN100	DN125	DN150	DN200	DN250	DN300
A	181	197	211	243	269	313	362	439	489
A1*	215	231	245	285	311	354	406	439	489
B	100	115	130	150	182	210	262	315	371
C	108	112	114	127	140	140	152	165	178
C1*	150	170	180	190	200	210	230	250	270

*A1 & C1 EVFL Long Face To Face Pattern

CODE	BODY	LINER	MATERIAL OPTIONS		
			DISC	SHAFT	PIN
AK	GG25 Cast Iron	NBR	Aluminium bronze	Aluminium bronze	Aluminium bronze
AA	GG25 Cast Iron	NBR	431 Stainless steel	431 Stainless steel	431 Stainless steel
BA	GG25 Cast Iron	EPDM	431 Stainless steel	431 Stainless steel	431 Stainless steel
KK	GGG40 Ductile Iron	NBR	Aluminium bronze	Aluminium bronze	Aluminium bronze

**THESE VALVES CAN BE SUPPLIED WITH ELECTRIC
PNEUMATIC OR HYDRAULIC OPERATED ACTUATORS**