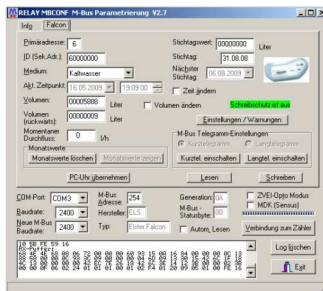


PR6M / PR7M

**Elster Honeywell
Inductive M-Bus
Communication Modules
To Suit Elster (Honeywell)
Water Meters**



Designed with advanced bi-directional inductive technology helping to enhance the efficiency of network system management, leakage control and reading of water meters remotely.

M-Bus (Meter-Bus) is a European standard (EN 13757-2 physical and link layer, EN 13757-3 application layer) for the remote reading of meters. The M-Bus interface is made for communication on two wires, making it very cost effective. The M-Bus was developed to fill the need for a system for the networking and remote reading of meters.

M-Bus Communication Module Standard Outputs			
Part No.	Compatible Meters	Cable Length	Wiring Data
PR6M	V200, V210, C4000*	2 M	Brown / White
PR7M	H4000, S2000, C4000**, C4200**	5 M	Connections are not polarity sensitive

* Low flow by-pass meter ** High flow main meter

M-Bus Protocol Standard EN 13757		Additional Data	
Transfer Speed	300 and 2400 Baud	Power Supply	Remote power supply from the M-Bus with automatic changeover to battery if the bus fails. 3.6V Lithium Battery (7-14 years life)
Addressing	Primary and secondary with wildcard	Environment	Indoor or outdoor use
Supported Function	FCB-bit, SNK_NKE, REQ_UD2, SND_UD, RSP_UD	IP Class	IP68
Telegram	Long and short switchable	Operational Temp	-15°C to 70°C
Software	MBCONF Freeware	Humidity Range	Up to 100%
Write Protection	For important settings	Closed Circuit M-Bus	Typically 1.4mA, 1.5mA max. (1 standard load)
Content	13 x Monthly volume with date 13 x Flow rate maximum values with date 13 x Leakage alarms Due date volume Date and time Alarm signals - battery - manipulation with date - backflow with date Pulse Value Momentary flow rate l/h or m ³ /h Flow rate calculation 1 min to 60 mins Back flow volume Decimal place	Bus Operation	1.5mA (1 standard load), no battery load
		Space (0 Bit)	Standby current + typically 13mA
		M-Bus Interface	TI TSS721 with 2 x 2150Ω protective resistor

Please Note : Always check compatibility with your equipment supplier