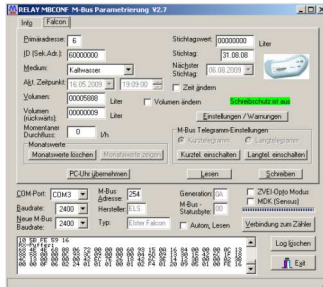


FALCON

**Elster Honeywell
Inductive M-Bus & Pulse
Communication Modules
To Suit Elster (Honeywell)
V200, V210, H4000, C4000 Water Meters**



Designed with advanced bi-directional inductive technology helping to enhance the efficiency of network system management, leakage control and reading of water meters remotely.

M-Bus

M-Bus (Meter-Bus) is a European standard (EN 13757-2 physical and link layer, EN 13757-3 application layer) for the remote reading of meters. The M-Bus interface is made for communication on two wires, making it very cost effective. The M-Bus was developed to fill the need for a system for the networking and remote reading of meter

Configurable Pulse Values via M-Bus with Relay M-Conf software

The pulse rate can be configured from 1 to 10,000 litres/pulse and the pulse length can be set between 10 to 500ms.

Factory default settings:

1 pulse per 1000 litres (K:1000) & Pulse length is 100ms.

Additional Data	
Power Supply	Remote power supply from the M-Bus with automatic changeover to battery if the bus fails. 3.6V Lithium Battery (15 years typical lifetime at 25°C ambient temperature)
Environment	Indoor or outdoor use
IP Class	IP68
Operational Temp	-15°C to 65°C

M-Bus Protocol Standard EN 13757 OMS Compatible	
Transfer Speed	300, 2400 & 9600 baud (auto bauding)
Telegram	Long and short switchable
Software	Relay M-Conf
Wiring	Green & Yellow (reverse polarity protection)
M-Bus Data Records	Current Meter Index Current Date & Time Total Backflow Volume Yearly Due Date Value (default, 01.01. of each year) Current Flow Rate Max. Flow Rate Value of each month with timestamp Backflow Alarm Date Manipulation Alarm Date (removal & magnetic fraud) 13 Last Monthly Index Values (long telegram only) 13 Monthly Max. Flow Rate Values with Date (long telegram only)

Pulse Output (acc. ISO22158) Configurable via M-Bus	
Pulse Rate	1 to 10,000 litres per pulse (Default 1 pulse per 1,000 litres)
Pulse Width	10 to 500ms (Default 100ms)
Output Options	1. Compensated Pulses + Alarm Line 2. Forward Pulses + Backward Pulses 3. All Pulse + Directional Flag 4. Two Compensated Pulse Outputs with Different Pulse Rates
Alarm Line	Wire-cut (Can be configured - Battery Low, Backflow, Tamper)
Wiring	White (Positive) Brown (Negative) Red (Alarm / 2 nd Output)

Please Note : Always check compatibility with your equipment supplier