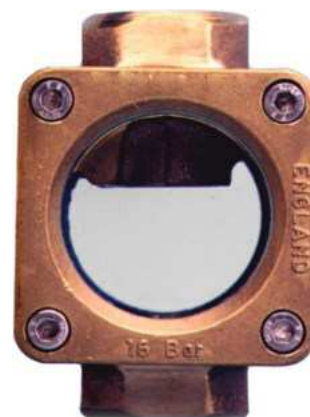


## JV190012

**Bronze  
Spout Type  
Flow Indicator**  
**Threaded BSPP**  
(Tapered or NPT on request)



The JV190012 spout type flow indicator is ideal for gravity feed systems and intermittent liquid flow duties.

This indicator has a large viewing window and an integral drip lip.

### Approvals, Features & Benefits

- Large circular viewing window
- Drip lip to aid detection
- Suitable for a wide range of fluids
- High quality robust design
- No minimum flow

### Pressure & Temperature

Max working pressure:-  
10 bar  
Temperature range:-  
0 to 100°C

BSPP	1/2	3/4	1
<b>L</b>	85	85	95
<b>W</b>	68	68	74
<b>D</b>	60	60	60
<b>C</b>	424	42	42
<b>Weight Kg</b>	1.0	1.0	1.3

### MATERIALS

<b>Body</b>	Bronze (LG2)
<b>Cover</b>	Brass
<b>Window</b>	Toughened Soda Lime (Toughened Borosilicate on request)
<b>Dome</b>	Annealed Borosilicate Glass
<b>Gasket</b>	Klingsil C4400
<b>Fasteners</b>	Stainless Steel