



SRFA-R & SRFA-S2-R

BELIMO
Spring Return 90°
Electric Actuator
20 Nm

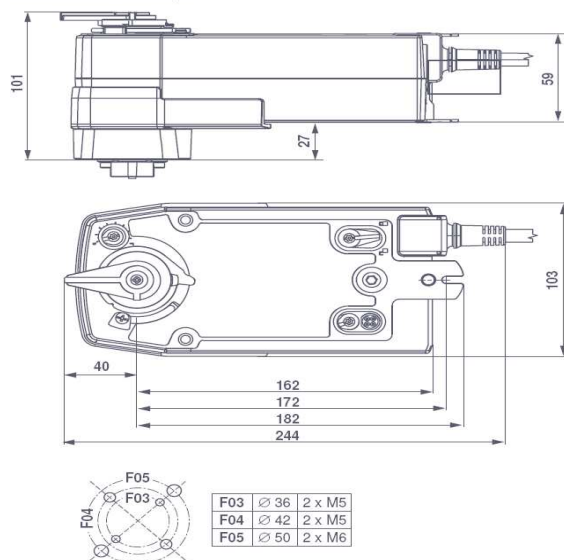


Standard Specifications

Enclosure	IP54	Travel Angle	90°
Power Supply	Universal Voltage: AC 24-240V / DC 24-125V 50/60Hz	Manual Operation	By hand crank & locking switch
Indicator	Mechanical Position Indicator	Connection supply	Cable 1m, 2 x 0.75 mm ²
Limit Switches	2 x SPDT, 1 x 10% / 1 x 11-90%	Ambient Temp	0 to +50°C

Model No.	Maximum Torque Output			Op. Time		Power Consumption In operation	Power Consumption In rest position	Power Consumption For wire sizing	Mode Of Operation	Weight approx.
	0°	45°	90°	50 / 60Hz 90° (sec.)	Spring 90° (sec.)					
SRFA-R	20	20	20	75	<20	7W	3W	18 VA	Type 1.AA	2.3 kg
SRFA-S2-R	20	20	20	75	<20	7W	3.5W	18 VA	Type 1.AA.B	2.5 kg

Dimensional drawings



SRFA-R Wiring (without feedback switches)

Wiring diagrams

AC 24...240 V / DC 24...125 V, open-close



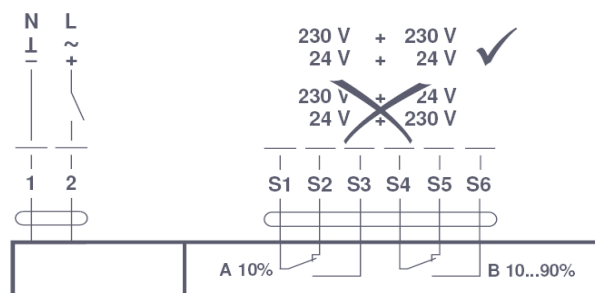
Cable colours:

1 = blue
2 = brown

SRFA-S2-R Wiring (with feedback switches)

Wiring diagrams

AC 24...240 V / DC 24...125 V, open-close



Available double square stem drives

9x9mm, 11x11mm or 14x14mm

Safety notes

- This device has been designed for the use in stationary heating, ventilation and air conditioning systems and is not allowed to be used outside the specified field of application, especially in aircraft or in any other airborne means of transport.
- This device may only be opened at the manufacturer's site. It does not contain any parts that can be replaced or repaired by the user.
- Parallel connection of other actuators possible. Observe the performance data.